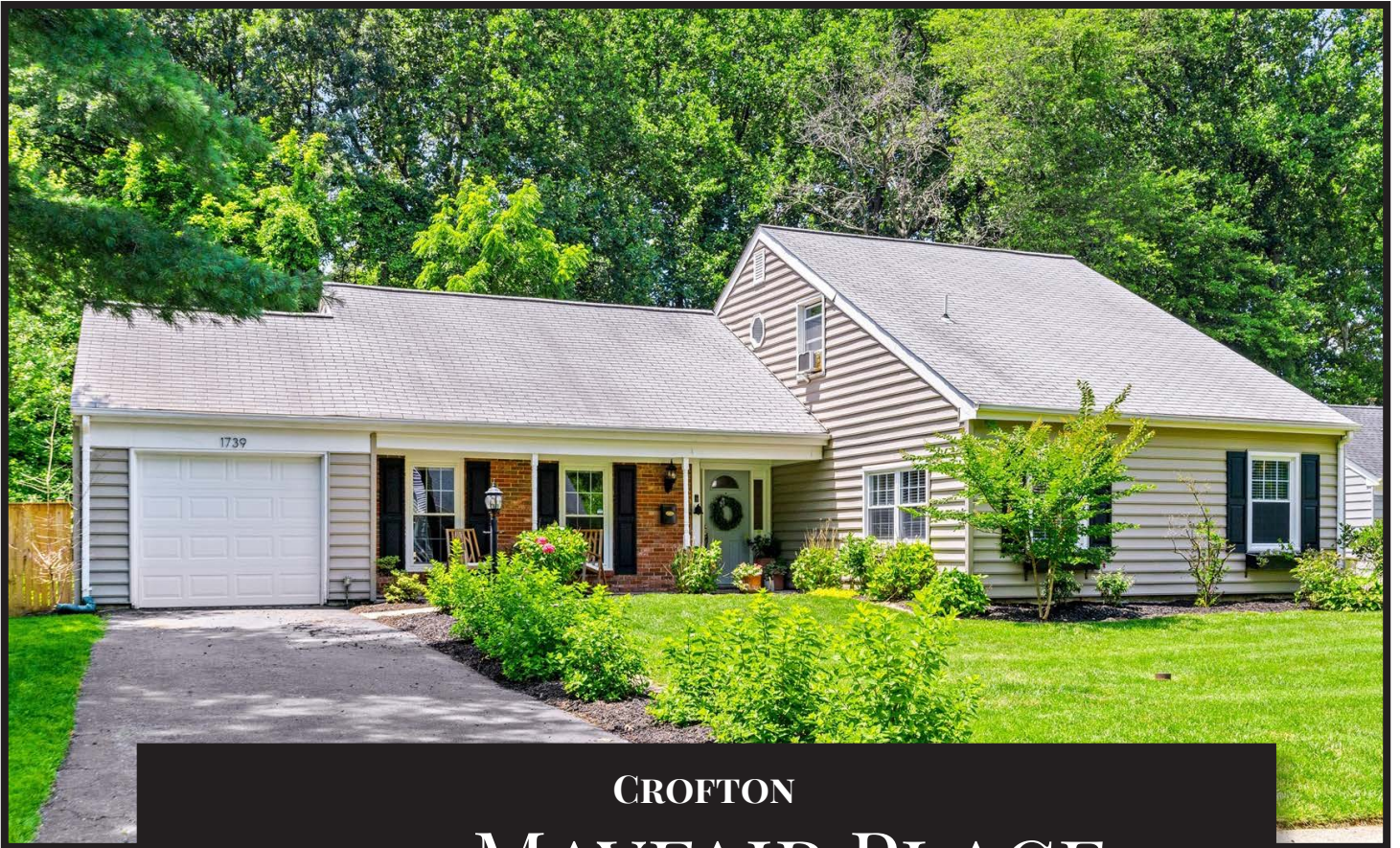


*Hubble
Bisbee*

CHRISTIE'S
INTERNATIONAL REAL ESTATE



CROFTON

1739 MAYFAIR PLACE

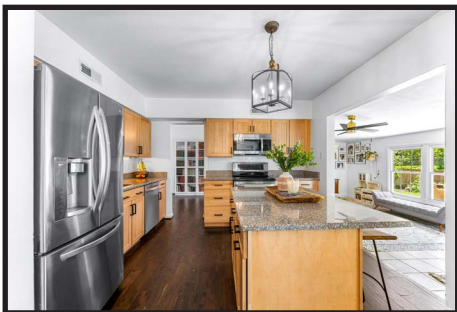


LYNN PEAPER

REALTOR® and Team Lead
Lynnpeaper@thepeapergroup.com
(410) 991-0111 (Mobile)

THE
PEAPER
GROUP

WWW.HUBBLEBISBEE.COM | (410) 321-1833 (OFFICE) | 





FOYER 6'7" X 5'11"

- Paneled entry door with half-round window and sidelights
- Ceiling light
- Access to Dining Room with coat closet
- Step-down to Living Room

LIVING ROOM 17'9" X 11'8"

- Vaulted ceiling
- Two windows with plantation blinds
- Wainscot moldings
- Ceiling fan with lighting
- Wall mount TV
- Step-up to Sitting Room

SITTING ROOM 12'3" X 9'7"

- Vaulted ceiling
- Wainscot moldings
- Five-light chandelier
- Access to Kitchen
- Wide cased portal to Family Room
- Access to Office

OFFICE 11'9" X 8'3"

- Built-in bookcases and bench
- Interior window to Garage
- Window
- Exit door with 6-pane window
- Linear chandelier

FAMILY ROOM 18'5" X 9'11"

- Ceramic tile floor
- Sliding glass doors to patio
- Double window
- Ceiling fan with light
- Wide portal to Kitchen

KITCHEN 11'11" X 10'0"

- Wood cabinetry including island/ breakfast bar
- Granite counters
- Subway tile backsplashes
- LG stainless steel French door refrigerator with water-ice dispenser
- LG stainless steel electric range
- LG stainless steel built-in microwave
- Whirlpool stainless steel dishwasher
- Stainless steel undermount sink
- Pendant light above island
- Under-cabinet lighting
- Open flow to Dining Room

DINING ROOM 15'6" X 12'0"

- Brick chimney with woodburning fireplace on raised hearth and rough-hewn wood mantel shelf
- Two windows with plantation blinds
- Modern 5-light linear chandelier
- Access to Laundry Room
- Flows to Hall

HALL 13'11" X 13'0"

- Open carpeted staircase to Upper Level
- Window with plantation blind
- Three closets
- Ceiling light
- Accesses Primary Bedroom, Bedroom 2 and Hall Bath

PRIMARY BEDROOM

21'11" X 15'10"

- Double window and 3 additional windows with plantation blinds
- Wal-in closet
- Ceiling fan with lighting

PRIMARY BATH 8'0" X 4'2"

- Patterned ceramic tile floor
- Chest vanity with quartz top, vessel sink, adjustable beveled round mirror and overhead lighting
- Shower stall with subway tile walls to ceiling, corner shelves and sliding glass doors
- Exhaust fan

BEDROOM 2 13'7" X 12'8"

- Two windows with plantation blinds
- Double closet with sliding mirrored doors
- Linear chandelier

HALL BATH 8'0" X 4'6"

- Ceramic tile floor
- Beadboard wainscot
- Chest vanity with solid surface top and seamless sink, adjustable beveled round mirror and overhead lighting
- Tub/shower combination with ceramic tile surround
- Exhaust fan

All information contained herein deemed reliable but not guaranteed by the Broker

LAUNDRY/UTILITY ROOM

8'0" X 5'3"

- HVAC unit with gas heat
- Gas-fired water heater
- Washer and dryer

UPPER LEVEL

- Carpeted staircase access with window

BEDROOM 3 21'11" X 10'2"

- Wall-to-wall carpeting
- Two windows with pleated shades
- Closet
- Window AC unit

BEDROOM 4 17'8" X 14'3"

- Wall-to-wall carpeting
- Two windows with pleated shades
- Closet
- Ceiling light
- Window AC unit

EXTERIOR

- Brick with beaded vinyl siding
- Asphalt shingle roof
- Covered front porch
- Stamped concrete partially covered patio
- Fenced back yard
- Standby generator
- Great location in Crofton Park in the heart of the Crofton Triangle

